



Commercial Street, Pontnewydd, Cwmbran

£1,200 pcm

Commercial property to rent, ideal for a takeaway business. Property comprises of front of house area, kitchen, large basement, potential for a 1 bedroom flat above.

01495236989

info@smartletwales.co.uk

Deposit: £1,200
Holding Deposit: £276.92

Lobby

w: 3.35m x l: 9.01m (w: 11' x l: 29' 7")

Kitchen

w: 4.19m x l: 7.04m (w: 13' 9" x l: 23' 1")

Basement

Front section is 3.35m x 9.01m
Rear section is 4.19m x 7.04 m

Lounge

w: 3.96m x l: 5.93m (w: 13' x l: 19' 5")

Bathroom

w: 1.34m x l: 2.89m (w: 4' 5" x l: 9' 6")

Bedroom 1

w: 3.89m x l: 4.13m (w: 12' 9" x l: 13' 7")

Please note

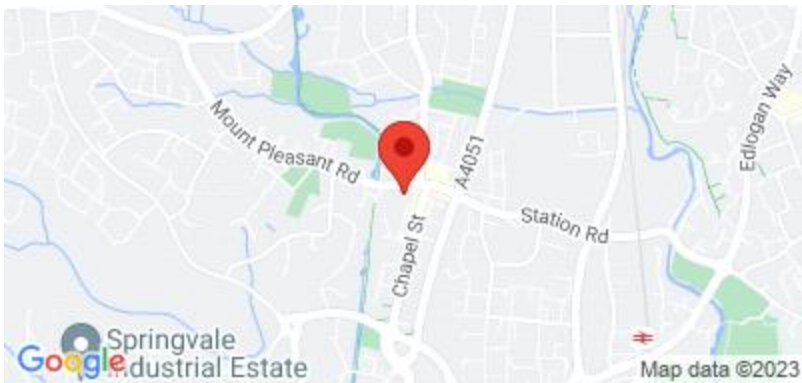
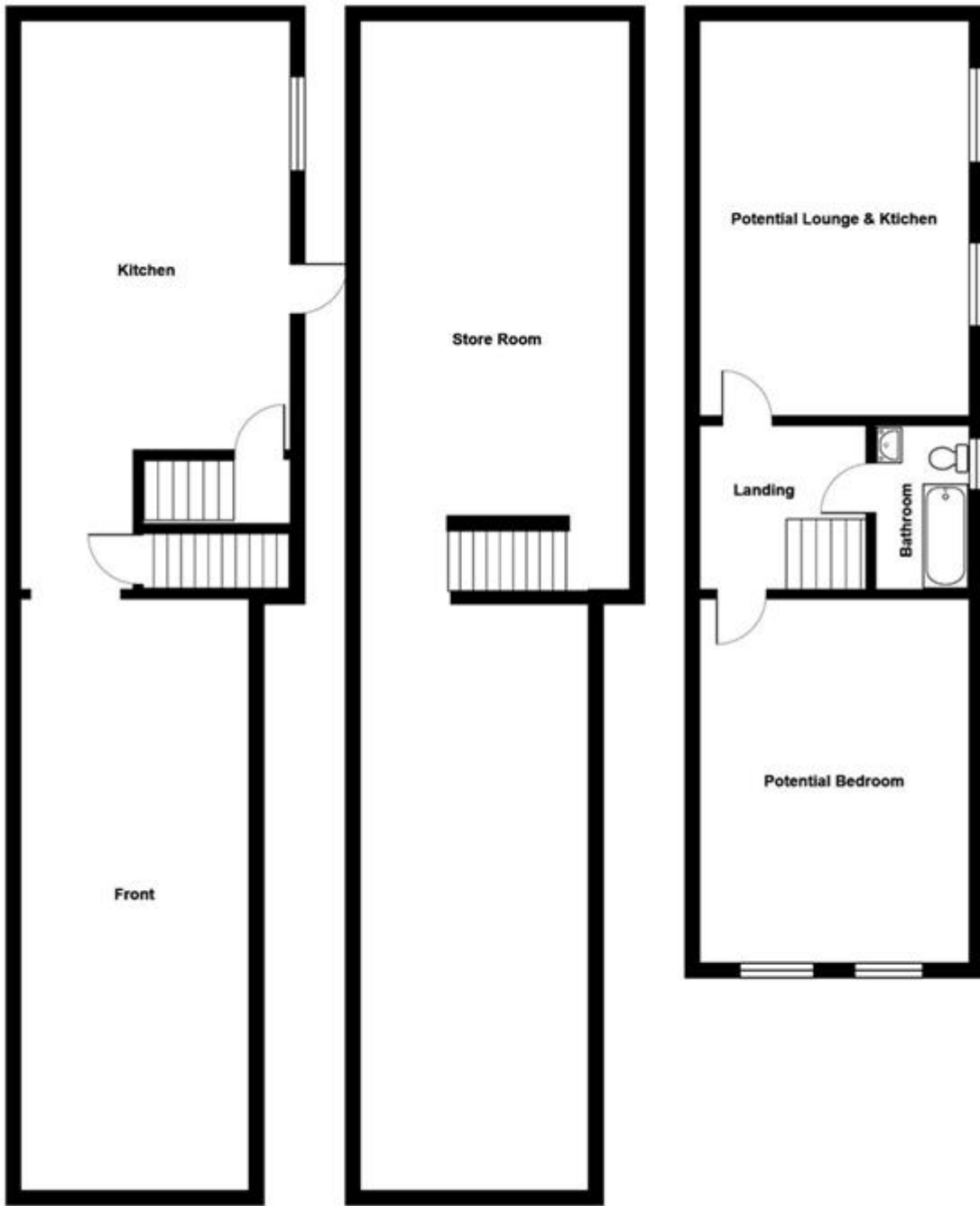
EPC Band D
Business rates and charges may apply

Long term let available

The monthly rental does not include the kitchen equipment which is available for purchase.







Whilst every effort is made to ensure the accuracy of these details, it should be noted that the measurements are approximate only. Floorplans are for representation purposes only and prepared according to the RICS Code of Measuring Practice by our floorplan provider. Therefore, the layout of doors, windows and rooms are approximate and should be regarded as such by any prospective tenant.